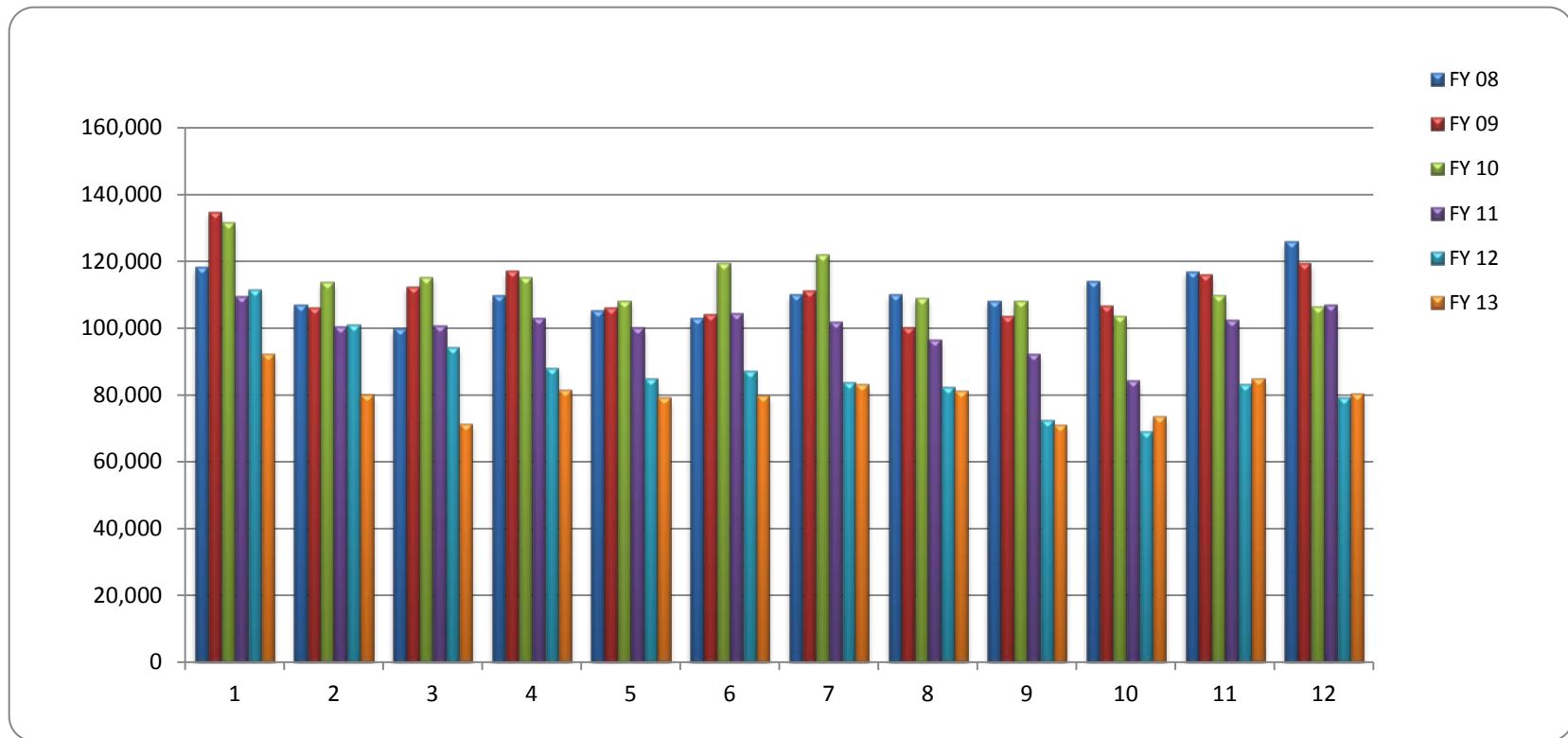


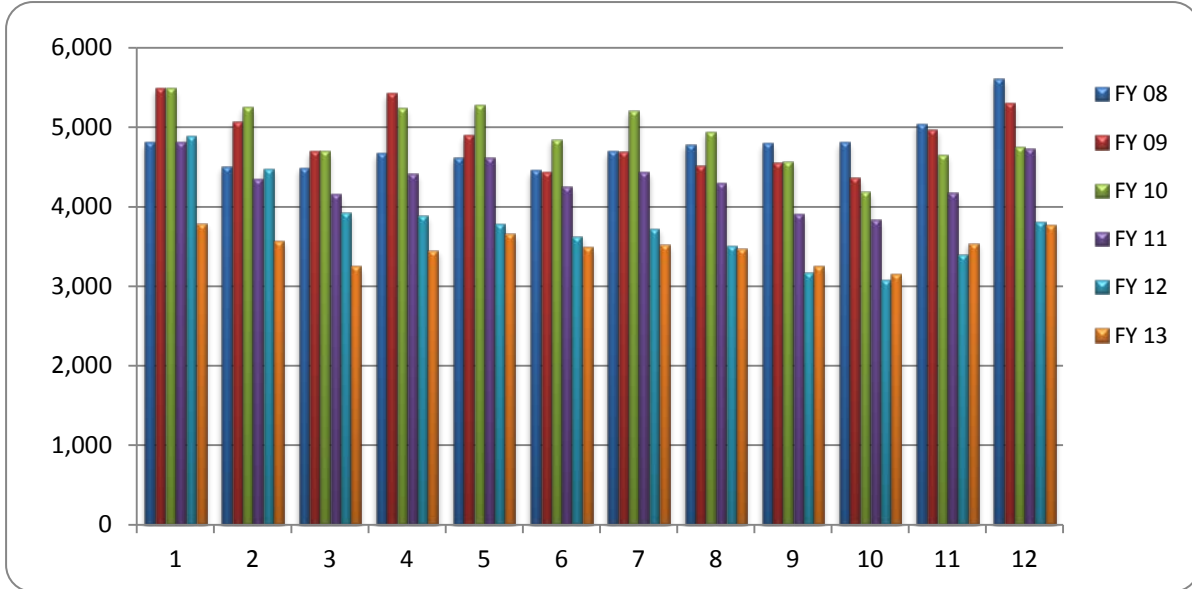
Montgomery Area Transit System Fiscal Year Passenger Trips Comparison

	<i>Oct</i>	<i>Nov</i>	<i>Dec</i>	<i>Jan</i>	<i>Feb</i>	<i>Mar</i>	<i>Apr</i>	<i>May</i>	<i>June</i>	<i>July</i>	<i>Aug</i>	<i>Sept</i>	Totals
FY 08	118,317	106,901	99,919	109,816	105,360	102,956	110,167	109,974	108,142	114,160	116,777	125,970	1,328,459
FY 09	134,731	106,192	112,195	117,046	106,007	104,127	111,185	100,137	103,482	106,530	115,906	119,398	1,336,936
FY 10	131,653	113,598	115,277	115,070	107,946	119,375	122,120	109,022	108,136	103,486	109,780	106,465	1,361,928
FY 11	109,570	100,331	100,796	103,101	100,107	104,416	101,933	96,367	92,303	84,183	102,439	106,936	1,202,482
FY 12	111,486	100,903	94,050	88,061	84,930	87,234	83,593	82,166	72,539	68,936	83,128	79,061	1,036,087
FY 13	92,208	80,137	71,378	81,467	79,187	79,707	83,110	81,094	70,921	73,695	84,843	80,276	958,023



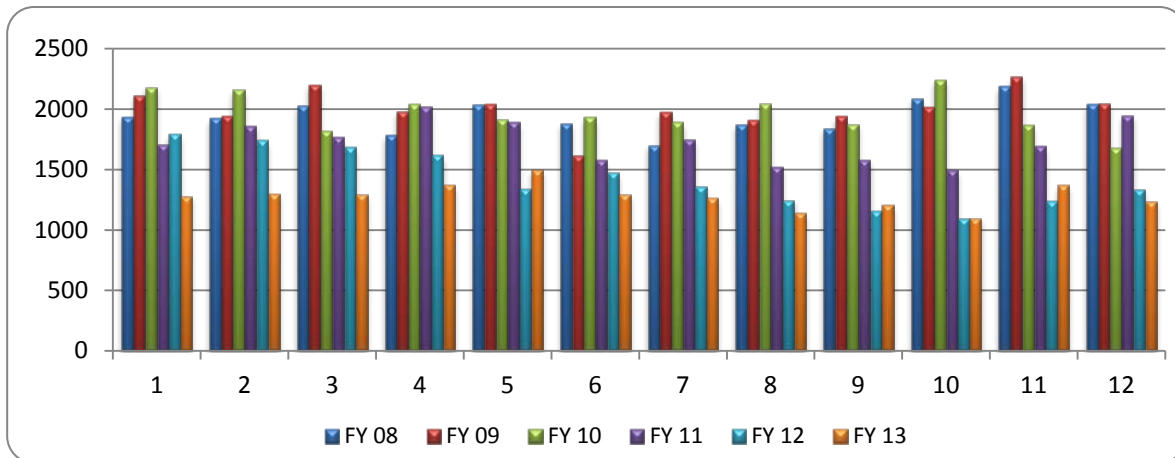
Montgomery Area Transit System Average Weekday Passenger Trips

	<i>Oct</i>	<i>Nov</i>	<i>Dec</i>	<i>Jan</i>	<i>Feb</i>	<i>Mar</i>	<i>Apr</i>	<i>May</i>	<i>Jun</i>	<i>Jul</i>	<i>Aug</i>	<i>Sep</i>
FY 08	4,808	4,510	4,488	4,667	4,628	4,454	4,698	4,791	4,798	4,810	5,040	5,610
FY 09	5,489	5,078	4,700	5,427	4,893	4,439	4,694	4,529	4,558	4,368	4,979	5,296
FY 10	5,488	5,247	4,696	5,243	5,277	4,854	5,207	4,939	4,574	4,194	4,650	4,750
FY 11	4,811	4,341	4,152	4,417	4,627	4,259	4,437	4,299	3,909	3,837	4,178	4,741
FY 12	4,891	4,475	3,934	3,886	3,780	3,630	3,720	3,508	3,180	3,074	3,399	3,810
FY 13	3,786	3,570	3,245	3,454	3,660	3,487	3,527	3,479	3,245	3,149	3,545	3,765



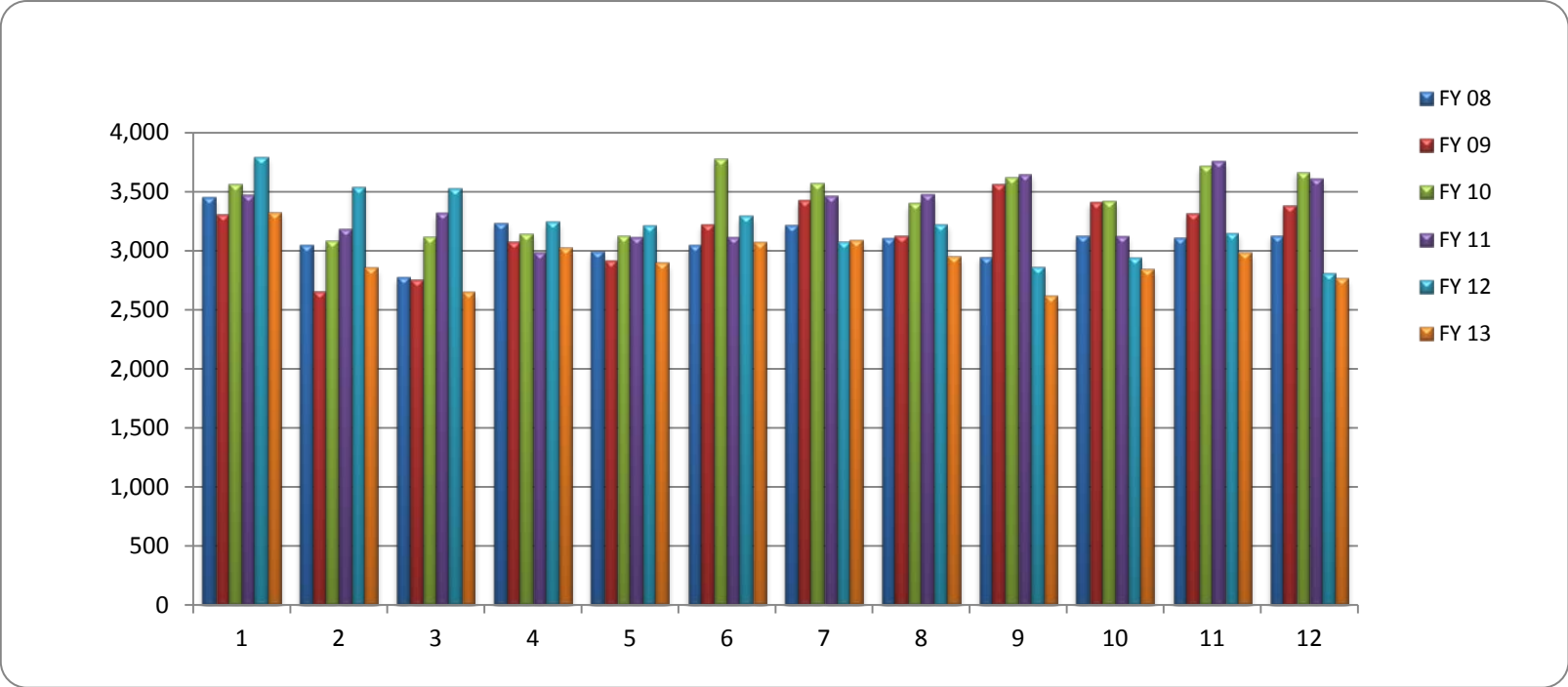
Saturdays

	<i>Oct</i>	<i>Nov</i>	<i>Dec</i>	<i>Jan</i>	<i>Feb</i>	<i>Mar</i>	<i>Apr</i>	<i>May</i>	<i>Jun</i>	<i>Jul</i>	<i>Aug</i>	<i>Sep</i>
FY 08	1936	1922	2032	1784	2044	1884	1705	1873	1846	2085	2188	2040
FY 09	2118	1943	2201	1981	2039	1619	1977	1911	1943	2018	2268	2045
FY 10	2184	2163	1815	2042	1920	1931	1892	2047	1876	2242	1868	1679
FY 11	1708	1861	1763	2025	1891	1574	1749	1523	1576	1490	1691	1948
FY 12	1795	1742	1681	1614	1338	1475	1366	1248	1151	1093	1235	1336
FY 13	1282	1300	1295	1371	1497	1294	1266	1138	1203	1102	1370	1242



Montgomery Area Transit System MAP Passenger Trips

	<i>Oct</i>	<i>Nov</i>	<i>Dec</i>	<i>Jan</i>	<i>Feb</i>	<i>Mar</i>	<i>Apr</i>	<i>May</i>	<i>June</i>	<i>July</i>	<i>Aug</i>	<i>Sept</i>	Totals
FY 08	3,455	3,043	2,777	3,240	2,997	3,043	3,217	3,103	2,952	3,134	3,111	3,133	37,205
FY 09	3,313	2,657	2,760	3,080	2,914	3,221	3,425	3,130	3,566	3,413	3,321	3,385	38,185
FY 10	3,566	3,088	3,119	3,143	3,134	3,787	3,579	3,401	3,627	3,422	3,718	3,670	41,254
FY 11	3,479	3,183	3,316	2,994	3,116	3,115	3,468	3,476	3,648	3,126	3,761	3,611	40,293
FY 12	3,795	3,546	3,531	3,243	3,213	3,295	3,078	3,224	2,867	2,939	3,148	2,811	38,690
FY 13	3,331	2,852	2,652	3,027	2,895	3,074	3,087	2,954	2,619	2,849	2,986	2,766	35,092



Montgomery Area Transit System Passenger Trips By Department

	<i>Oct</i>	<i>Nov</i>	<i>Dec</i>	<i>Jan</i>	<i>Feb</i>	<i>Mar</i>	<i>Apr</i>	<i>May</i>	<i>June</i>	<i>July</i>	<i>Aug</i>	<i>Sept</i>	Totals
FIXED	88,877	77,285	68,726	78,440	76,292	76,633	80,023	78,140	68,302	70,846	81,857	77,510	922,931
MAP	3,331	2,852	2,652	3,027	2,895	3,074	3,087	2,954	2,619	2,849	2,986	2,766	35,092
TOTAL	92,208	80,137	71,378	81,467	79,187	79,707	83,110	81,094	70,921	73,695	84,843	80,276	958,023

