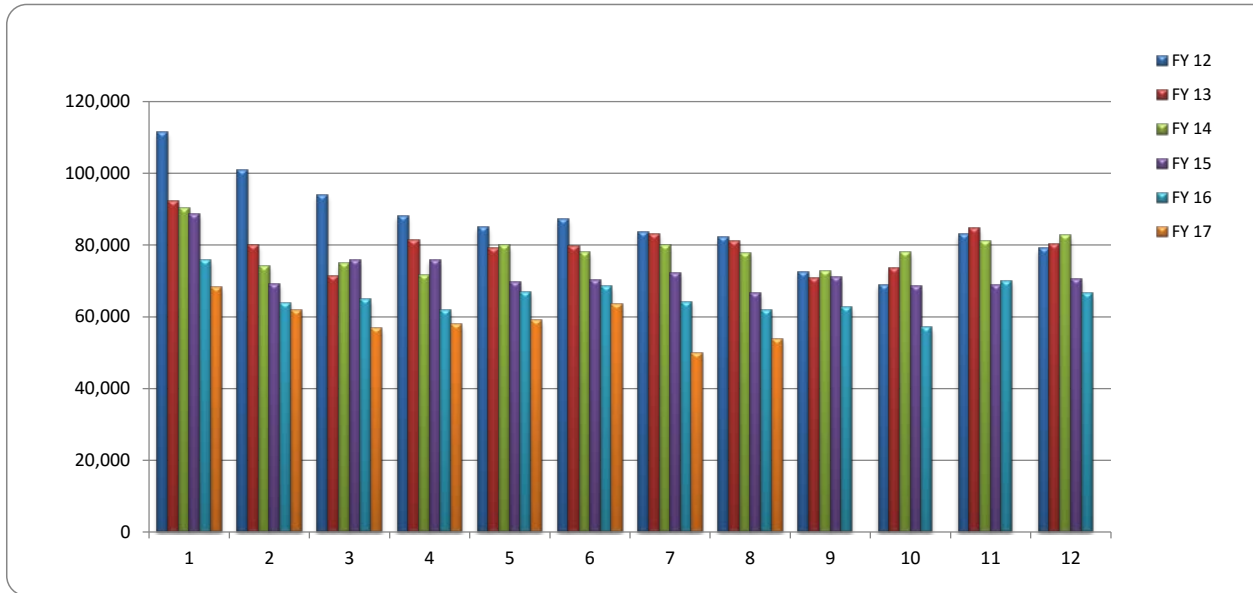


# Fiscal Year Passenger Trips Comparison



	Oct	Nov	Dec	Jan	Feb	Mar	Apr	May	June	July	Aug	Sept	Totals
<b>FY 12</b>	111,486	100,903	94,050	88,061	84,930	87,234	83,593	82,166	72,539	68,936	83,128	79,061	<b>1,036,087</b>
<b>FY 13</b>	92,208	80,137	71,378	81,467	79,187	79,707	83,110	81,094	70,921	73,695	84,843	80,276	<b>958,023</b>
<b>FY 14</b>	90,369	74,334	74,912	71,604	79,843	78,099	80,116	77,922	72,772	78,120	81,166	82,663	<b>941,920</b>
<b>FY 15</b>	88,705	69,161	75,839	75,713	69,694	70,251	72,238	66,678	71,235	68,711	68,990	70,686	<b>867,901</b>
<b>FY 16</b>	75,821	63,957	64,894	62,032	67,095	68,485	64,282	62,019	62,725	57,089	70,082	66,588	<b>785,069</b>
<b>FY 17</b>	68,417	61,921	57,075	57,894	59,137	63,687	49,985	53,947					<b>472,063</b>



### 2017

# of Days operated	Oct 2016	Nov 2016	Dec 2016	Jan 2017	Feb 2017	Mar 2017	Apr 2017	May 2017	June 2017	July 2017	Aug 2017	Sept 2017
Weekday	21	21	22	20	21	23	20	22	22	20	23	20
Saturday	5	4	4	4	4	4	5	4	4	5	4	5
		CLOSED Thanksgiving	CLOSED Christmas	CLOSED New Years				CLOSED Mem Day		CLOSED Indep. Day		CLOSED Labor Day

### 2016

# of Days operated	Oct 2015	Nov 2015	Dec 2015	Jan 2016	Feb 2016	Mar 2016	Apr 2016	May 2016	June 2016	July 2016	Aug 2016	Sept 2016
Weekday	22	20	22	20	21	23	21	21	22	20	23	21
Saturday	5	4	4	5	4	4	4	4	4	5	4	4
		CLOSED Thanksgiving	CLOSED Christmas	CLOSED New Years				CLOSED Mem Day		CLOSED Indep. Day		CLOSED Labor Day

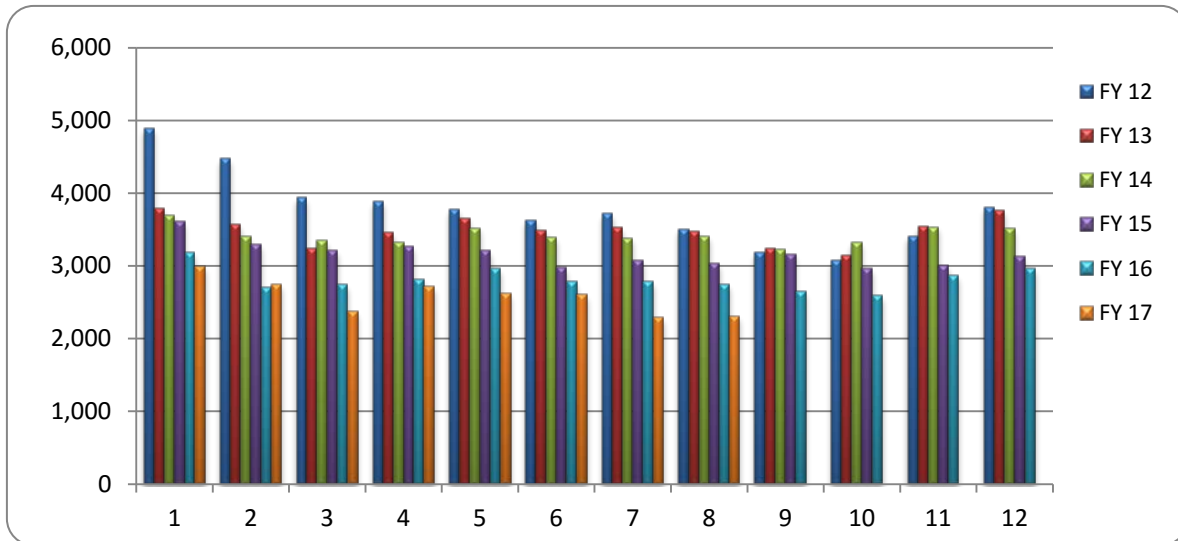
### 2015

# of Days operated	Oct 2014	Nov 2014	Dec 2014	Jan 2015	Feb 2015	Mar 2015	Apr 2015	May 2015	June 2015	July 2015	Aug 2015	Sept 2015
Weekday	23	19	22	21	20	22	22	20	22	23	21	21
Saturday	5	5	4	5	4	4	4	5	4	3	5	4
		CLOSED Thanksgiving	CLOSED Christmas	CLOSED New Years				CLOSED Mem Day		CLOSED Indep. Day		CLOSED Labor Day

# Average Weekday Passenger Trips

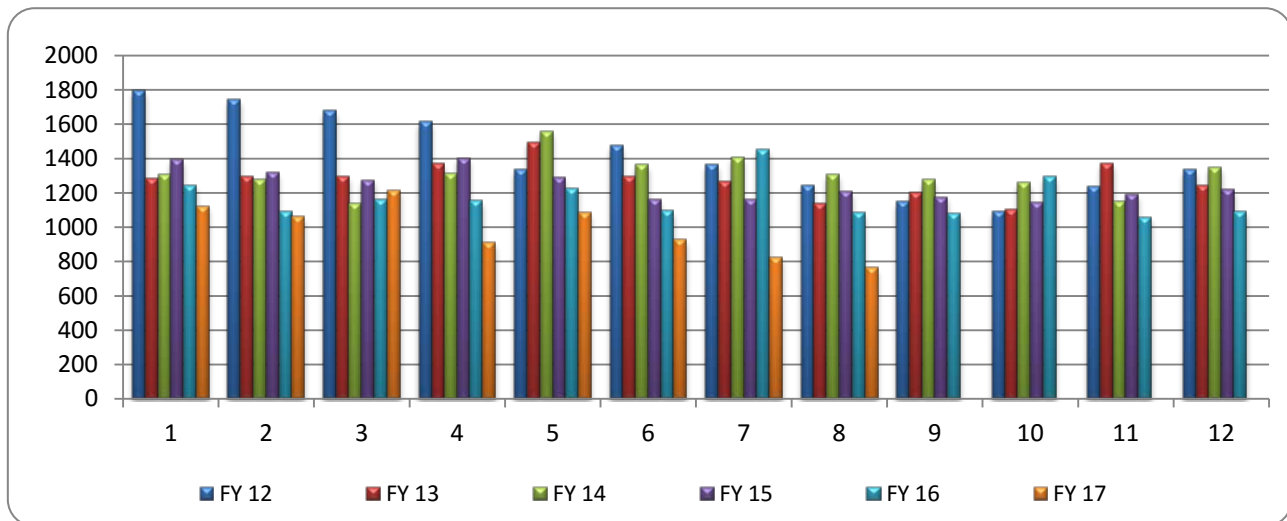


	<i>Oct</i>	<i>Nov</i>	<i>Dec</i>	<i>Jan</i>	<i>Feb</i>	<i>Mar</i>	<i>Apr</i>	<i>May</i>	<i>Jun</i>	<i>Jul</i>	<i>Aug</i>	<i>Sep</i>
<b>FY 12</b>	4,891	4,475	3,934	3,886	3,780	3,630	3,720	3,508	3,180	3,074	3,399	3,810
<b>FY 13</b>	3,786	3,570	3,245	3,454	3,660	3,487	3,527	3,479	3,245	3,149	3,545	3,765
<b>FY 14</b>	3,702	3,397	3,348	3,318	3,519	3,394	3,386	3,399	3,222	3,321	3,536	3,512
<b>FY 15</b>	3,614	3,292	3,216	3,271	3,212	2,982	3,072	3,032	3,168	2,967	3,005	3,134
<b>FY 16</b>	3,185	2,709	2,739	2,812	2,961	2,787	2,784	2,747	2,655	2,595	2,863	2,963
<b>FY 17</b>	2,991	2,746	2,373	2,713	2,618	2,608	2,293	2,313				



## Saturdays

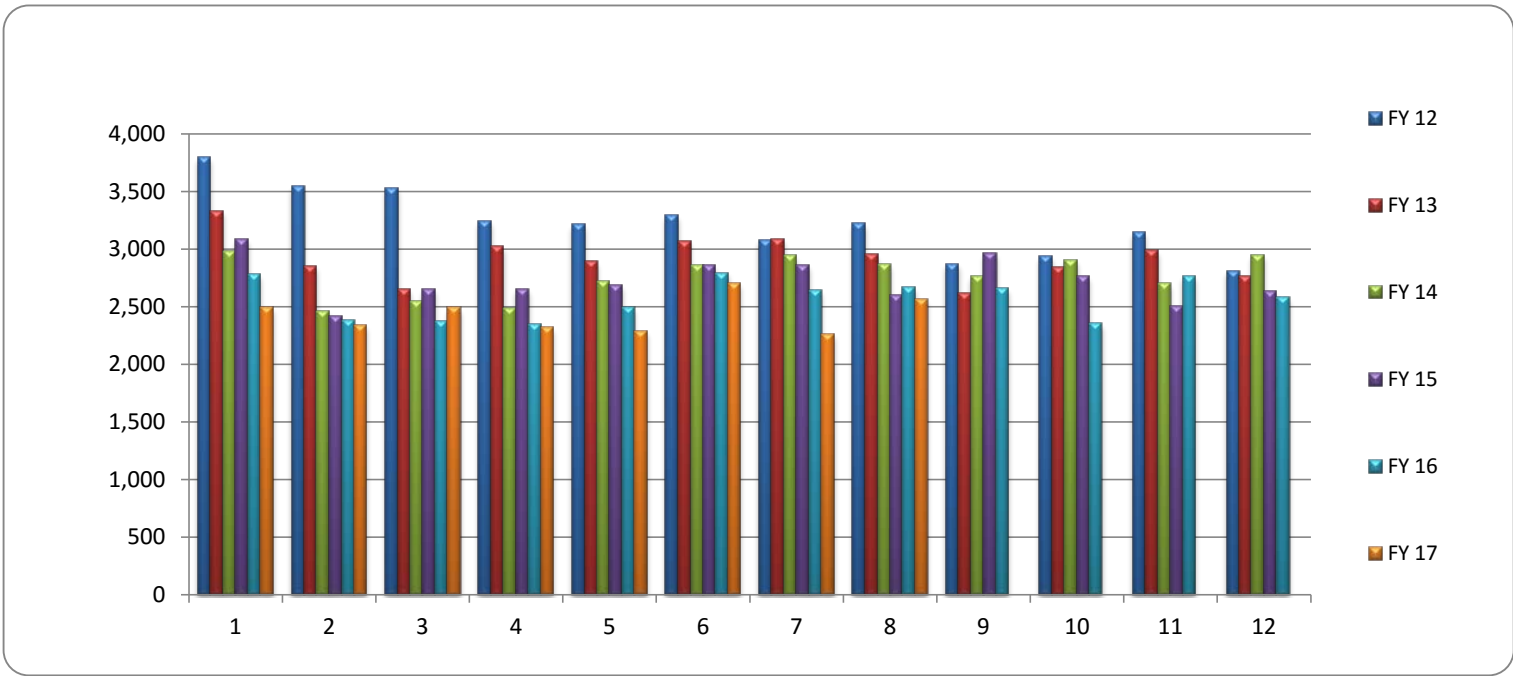
	<i>Oct</i>	<i>Nov</i>	<i>Dec</i>	<i>Jan</i>	<i>Feb</i>	<i>Mar</i>	<i>Apr</i>	<i>May</i>	<i>Jun</i>	<i>Jul</i>	<i>Aug</i>	<i>Sep</i>
<b>FY 12</b>	1795	1742	1681	1614	1338	1475	1366	1248	1151	1093	1235	1336
<b>FY 13</b>	1282	1300	1295	1371	1497	1294	1266	1138	1203	1102	1370	1242
<b>FY 14</b>	1305	1277	1139	1313	1560	1365	1406	1308	1278	1262	1152	1348
<b>FY 15</b>	1396	1321	1274	1404	1293	1161	1166	1210	1177	1144	1191	1219
<b>FY 16</b>	1248	1088	1161	1157	1228	1097	1455	1085	1081	1296	1057	1089
<b>FY 17</b>	1123	1062	1216	912	1086	928	825	764				



# MAP Passenger Trips



	<i>Oct</i>	<i>Nov</i>	<i>Dec</i>	<i>Jan</i>	<i>Feb</i>	<i>Mar</i>	<i>Apr</i>	<i>May</i>	<i>June</i>	<i>July</i>	<i>Aug</i>	<i>Sept</i>	<b>Totals</b>
<b>FY 12</b>	3,795	3,546	3,531	3,243	3,213	3,295	3,078	3,224	2,867	2,939	3,148	2,811	<b>38,690</b>
<b>FY 13</b>	3,331	2,852	2,652	3,027	2,895	3,074	3,087	2,954	2,619	2,849	2,986	2,766	<b>35,092</b>
<b>FY 14</b>	2,985	2,463	2,551	2,484	2,723	2,860	2,946	2,867	2,765	2,900	2,706	2,944	<b>33,194</b>
<b>FY 15</b>	3,084	2,416	2,654	2,652	2,685	2,860	2,863	2,604	2,966	2,770	2,509	2,637	<b>32,700</b>
<b>FY 16</b>	2,781	2,381	2,378	2,352	2,494	2,797	2,644	2,670	2,659	2,357	2,763	2,585	<b>30,861</b>
<b>FY 17</b>	2,495	2,342	2,492	2,324	2,289	2,707	2,264	2,565					<b>19,478</b>



# Passenger Trips By Department FY 2017



	Oct	Nov	Dec	Jan	Feb	Mar	Apr	May	June	July	Aug	Sept	Totals
<b>FIXED</b>	65,922	59,579	54,583	55,570	56,848	60,980	47,721	51,382	0	0	0	0	<b>452,585</b>
<b>MAP</b>	2,495	2,342	2,492	2,324	2,289	2,707	2,264	2,565	0	0	0	0	<b>19,478</b>
<b>TOTAL</b>	<b>68,417</b>	<b>61,921</b>	<b>57,075</b>	<b>57,894</b>	<b>59,137</b>	<b>63,687</b>	<b>49,985</b>	<b>53,947</b>	<b>0</b>	<b>0</b>	<b>0</b>	<b>0</b>	<b>472,063</b>

