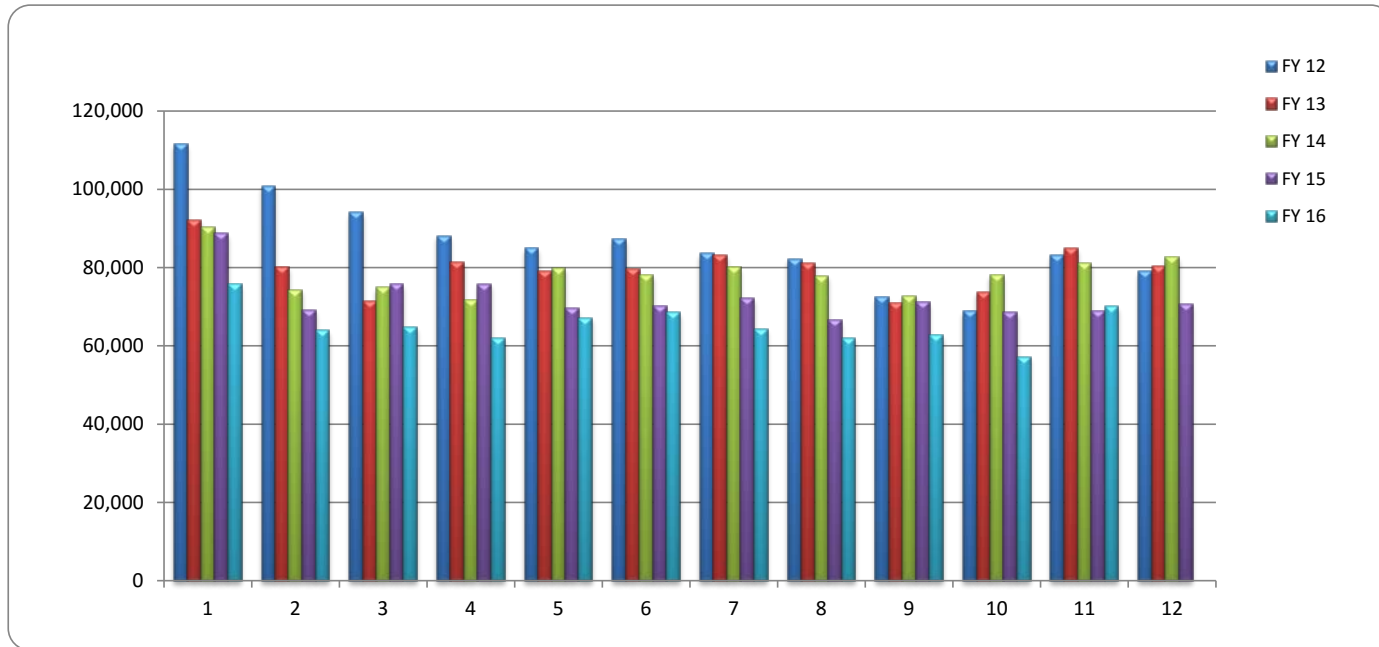


Fiscal Year Passenger Trips Comparison



	Oct	Nov	Dec	Jan	Feb	Mar	Apr	May	June	July	Aug	Sept	Totals
FY 12	111,486	100,903	94,050	88,061	84,930	87,234	83,593	82,166	72,539	68,936	83,128	79,061	1,036,087
FY 13	92,208	80,137	71,378	81,467	79,187	79,707	83,110	81,094	70,921	73,695	84,843	80,276	958,023
FY 14	90,369	74,334	74,912	71,604	79,843	78,099	80,116	77,922	72,772	78,120	81,166	82,663	941,920
FY 15	88,705	69,161	75,839	75,713	69,694	70,251	72,238	66,678	71,235	68,711	68,990	70,686	867,901
FY 16	75,821	63,957	64,894	62,032	67,095	68,485	64,282	62,019	62,725	57,089	70,082		718,481



2016

# of Days operated	Oct 2015	Nov 2015	Dec 2015	Jan 2016	Feb 2016	Mar 2016	Apr 2016	May 2016	June 2016	July 2016	Aug 2016	Sept 2016
Weekday	22	20	22	20	21	23	21	21	22	20	23	21
Saturday	5	4	4	5	4	4	4	4	4	5	4	4

2015

# of Days operated	Oct 2014	Nov 2014	Dec 2014	Jan 2015	Feb 2015	Mar 2015	Apr 2015	May 2015	June 2015	July 2015	Aug 2015	Sept 2015
Weekday	23	19	22	21	20	22	22	20	22	23	21	21
Saturday	5	5	4	5	4	4	4	5	4	3	5	4

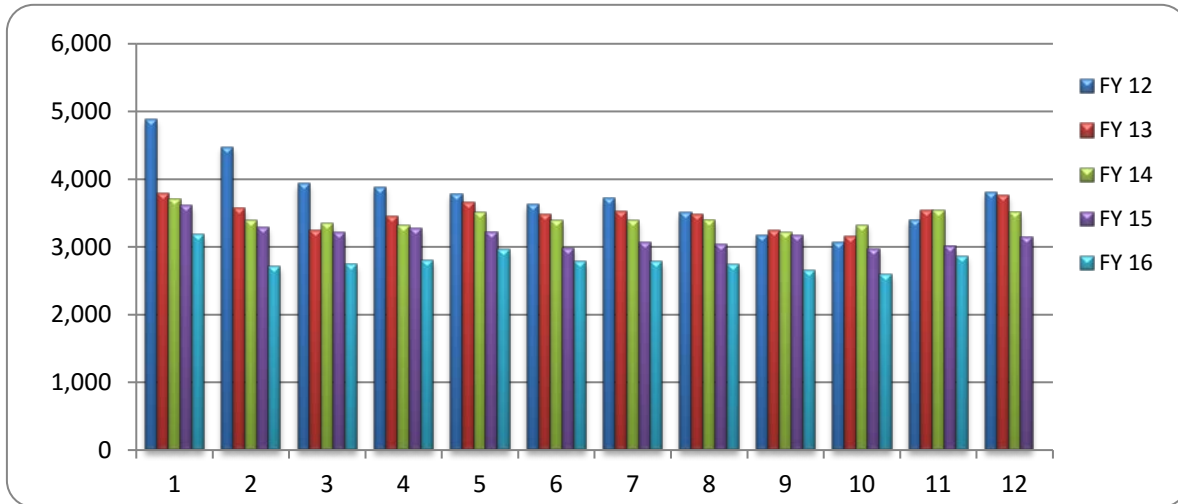
CLOSED 4th

# of Days operated	Oct 2013	Nov 2013	Dec 2013	Jan 2014	Feb 2014	Mar 2014	Apr 2014	May 2014	June 2014	July 2014	Aug 2014	Sept 2014
Weekday	23	20	21	22	20	21	23	21	21	22	21	21
Saturday	4	5	4	4	4	5	4	5	4	3	5	4

Average Weekday Passenger Trips

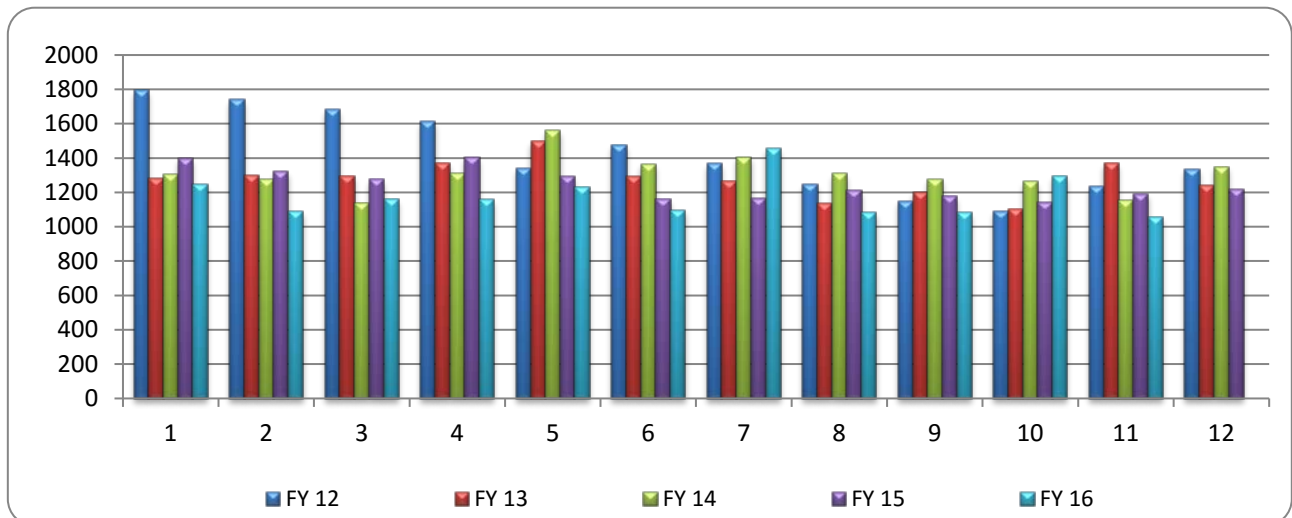


	<i>Oct</i>	<i>Nov</i>	<i>Dec</i>	<i>Jan</i>	<i>Feb</i>	<i>Mar</i>	<i>Apr</i>	<i>May</i>	<i>Jun</i>	<i>Jul</i>	<i>Aug</i>	<i>Sep</i>
FY 12	4,891	4,475	3,934	3,886	3,780	3,630	3,720	3,508	3,180	3,074	3,399	3,810
FY 13	3,786	3,570	3,245	3,454	3,660	3,487	3,527	3,479	3,245	3,149	3,545	3,765
FY 14	3,702	3,397	3,348	3,318	3,519	3,394	3,386	3,399	3,222	3,321	3,536	3,512
FY 15	3,614	3,292	3,216	3,271	3,212	2,982	3,072	3,032	3,168	2,967	3,005	3,134
FY 16	3,185	2,709	2,739	2,812	2,961	2,787	2,784	2,747	2,655	2,595	2,863	



Saturdays

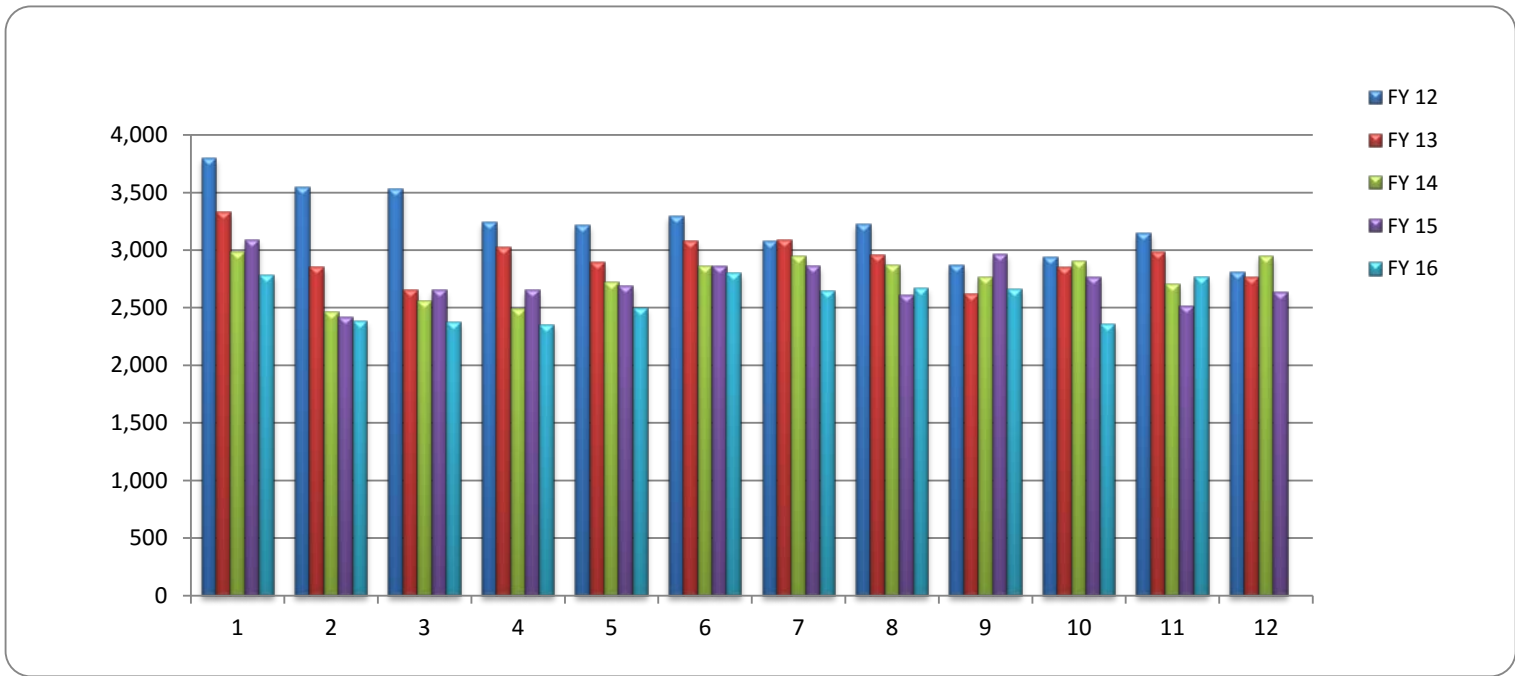
	<i>Oct</i>	<i>Nov</i>	<i>Dec</i>	<i>Jan</i>	<i>Feb</i>	<i>Mar</i>	<i>Apr</i>	<i>May</i>	<i>Jun</i>	<i>Jul</i>	<i>Aug</i>	<i>Sep</i>
FY 12	1795	1742	1681	1614	1338	1475	1366	1248	1151	1093	1235	1336
FY 13	1282	1300	1295	1371	1497	1294	1266	1138	1203	1102	1370	1242
FY 14	1305	1277	1139	1313	1560	1365	1406	1308	1278	1262	1152	1348
FY 15	1396	1321	1274	1404	1293	1161	1166	1210	1177	1144	1191	1219
FY 16	1248	1088	1161	1157	1228	1097	1455	1085	1081	1296	1057	



MAP Passenger Trips



	<i>Oct</i>	<i>Nov</i>	<i>Dec</i>	<i>Jan</i>	<i>Feb</i>	<i>Mar</i>	<i>Apr</i>	<i>May</i>	<i>June</i>	<i>July</i>	<i>Aug</i>	<i>Sept</i>	Totals
FY 12	3,795	3,546	3,531	3,243	3,213	3,295	3,078	3,224	2,867	2,939	3,148	2,811	38,690
FY 13	3,331	2,852	2,652	3,027	2,895	3,074	3,087	2,954	2,619	2,849	2,986	2,766	35,092
FY 14	2,985	2,463	2,551	2,484	2,723	2,860	2,946	2,867	2,765	2,900	2,706	2,944	33,194
FY 15	3,084	2,416	2,654	2,652	2,685	2,860	2,863	2,604	2,966	2,770	2,509	2,637	32,700
FY 16	2,781	2,381	2,378	2,352	2,494	2,797	2,644	2,670	2,659	2,357	2,763		28,276



Passenger Trips By Department FY 2016



	<i>Oct</i>	<i>Nov</i>	<i>Dec</i>	<i>Jan</i>	<i>Feb</i>	<i>Mar</i>	<i>Apr</i>	<i>May</i>	<i>June</i>	<i>July</i>	<i>Aug</i>	<i>Sept</i>	Totals
FIXED	73,040	61,576	62,516	59,680	64,601	65,688	61,638	59,349	60,066	54,732	67,319		690,205
MAP	2,781	2,381	2,378	2,352	2,494	2,797	2,644	2,670	2,659	2,357	2,763		28,276
TOTAL	75,821	63,957	64,894	62,032	67,095	68,485	64,282	62,019	62,725	57,089	70,082	0	718,481

